



# SUSHI BISTRO SAKURA

## STARTERS

**V** - VEGETARIAN  
**VE** - VEGAN

### COLD

|  |      |
|--|------|
| SEAWEED SALAD - VE   | 4.5€ |
| KIMCHI (SPICY) - VE  | 4.5€ |
| OHITASHI - VE<br>SPINACH WITH DASHIFOND  | 4.5€ |
| SPINACH WITH YUZU SESAME SAUCE - (F,K) VE  | 6€   |
| KAISEN SALAD - (B,D,F,K) VE<br>CHEF'S RECOMMENDED FISHES, SALAD, RADISH,<br>HANDMADE JAPANESE DRESSING | 16€  |

### WARM

|  |       |
|--|-------|
| EDAMAME - VE   | 4.8€  |
| EDAMAME WITH TRUFFLE SALT - VE   | 6€    |
| MISO SOUP - (F) VE<br>MISO, WAKAME, FRIED TOFU, CHIVES                   | 4.7€  |
| EGGPLANT WITH DENGAKU-MISO - (F,K) VE                                    | 8€    |
| FIG TEMPURA - (A,A1) V<br>FIGS, MASCARPONE, SESAME PATE                  | 7€    |
| VEGETABLE TEMPURA - (A,A1) VE  | 7€    |
| GYOUZA VEGGIE (4 PCS) - (A,A1) VE  | 5.8€  |
| FRIED SOFTSHELL CRAB - (B,K,C)   | 15€   |
| CALAMAR AND KING TRUMPET MUSHROOMS<br>SAUTE' IN BUTTER SOY SAUCE - (N,G) | 14€   |
| KING PRAWN KRAPPEN - (A,B,C,G)   | 16.5€ |
| ROASTED JAPANESE SCALLOPS AND ASPARAGUS<br>IN BUTTER-SOY SAUCE - (G)     | 18.5€ |
| GRILLED ALASKAN BLACK COD MARINATED<br>WITH SAIKYO MISO - (D,F)          | 37€   |
| ABURI SALMON - (D)<br>SALMON, ONIONS, SPROUTS                            | 12€   |



Ohitashi



Edamame



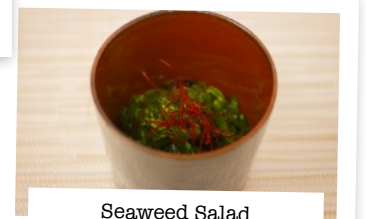
Eggplant with Dengaku-Miso



Fig Tempura



Softshell Crab



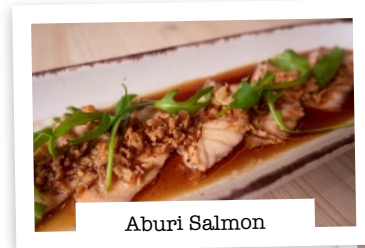
Seaweed Salad



Calamar



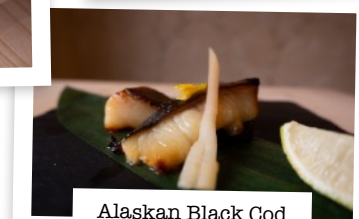
Scallops and Asparagus



Aburi Salmon



King Prawn Krappen



Alaskan Black Cod





### SASHIMI

|                              |     |
|------------------------------|-----|
| SALMON SASHIMI (6 PCS) - (D) | 15€ |
| TUNA SASHIMI (6 PCS) - (D)   | 17€ |
| MIXED SASHIMI (6 PCS) - (D)  | 16€ |
| SALMON 3PCS, TUNA 3PCS       |     |

### EXTRA REIS

|                            |
|----------------------------|
| SMALL PORTION 90G - 2€ VE  |
| LARGE PORTION 180G - 3€ VE |
| RED RICE - 4€ VE           |



### SUSHI SETS

|  |       |
|--|-------|
| SALMON AND TUNA NIGIRI - (D)<br>SALMON 4ST, TUNA 4ST   | 17€   |
| SALMON DREAM- (C,D)<br>SALMON SPECIAL 6PCS, SALMON MAKI 6PCS, SALMON NIGIRI 3PCS   | 19€   |
| ROLL SET - (B,C,D,K,A,A1)<br>SALMON SPECIAL 3PCS, FRIED PRAWNS 3PCS,<br>PRINCIPAL 3ST, SPICY TUNA 3ST  | 16.8€ |
| OKE FOR 2-3 PEOPLE - (B,C,D,K,A,A1)<br>SALMON SPECIAL 6PCS, TUNA SPECIAL 6PCS, FRIED PRAWNS 6PCS, PRINCIPAL<br>6PCS, SPICY TUNA 6PCS, SALMON NIGIRI 2PCS, TUNA NIGIRI 2PCS | 51€   |

SALMON AND TUNA NIGIRI



SALMON DREAM



OKE





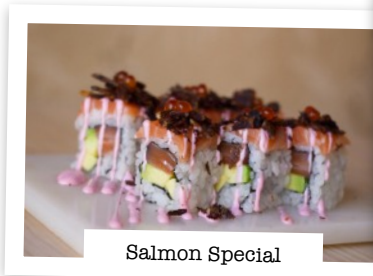
## SUSHI

### SAKURA ROLLS (6 PCS)

**TYPHON** - (B,D,C) 17.5€  
EEL, SHRIMP, MAYO

**TUNA SPECIAL** - (C,D) 14.2€  
TUNA, AVOCADO

**SALMON SPECIAL** - (C,D) 13.5€  
SALMON, AVOCADO



Salmon Special



Tuna Special

### SPECIAL ROLLS (6 PCS)

**LOX ROLL** - (C,D) 13€  
SALMON, CREAM CHEESE, CUCUMBER

**FIRE (SPICY)** - (C,D,F) 13€  
TUNA, COOKED TUNA PASTE WITH MAYO, RADISH PICKLES, ONIONS

**SOFTSHELL CRAB ROLL** - (C,K) 17€  
SOFTSHELL CRAB, CUCUMBER

**GORILLA** - (C,D,G) 18€  
EEL, SALMON, CREAM CHEESE, AVOCADO



Typhon



Softshell Crab Roll



Spicy Tuna



Lox Roll

### ROLLS (6 PCS)

**SPICY TUNA** - (C,D,K) 8€  
COOKED TUNA PASTE WITH MAYO, CARROTS, ONIONS, RADISH PICKLES

**PRINCIPAL** - (C,D) 9€  
SALMON, AVOCADO, ARUGULA

**FRIED SHRIMP ROLL** - (C,B,A,A1) 9.5€  
SHRIMP, SESAME SEEDS, MAYO

**POKE ROLL** - (D) 11€  
TUNA, AVOCADO, SESAME SEEDS

**GANGNAM** - 10€  
GRILLED BEEF, RADISH PICKLES, SESAME SEEDS



Principal



Fried Shrimp Roll



Poke Roll

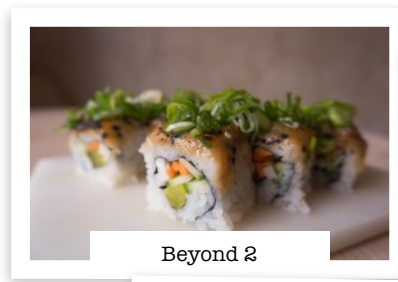






### VEGGIE ROLLS (6 PCS)

|  |      |
|--|------|
| <b>BEYOND - VE</b>                             | 9.5€ |
| AVOCADO, CARROT, RADISH, SPROUT                |      |
| <b>BEYOND 2 - (F) VE</b>                       | 8€   |
| MISO, SESAME, CARROT, RADISH, SESAME, CUCUMBER |      |
| <b>KAKIAGE ROLL - (A,A1) VE</b>                | 9€   |
| VEGETABLE TEMPURA, SPROUT                      |      |
| <b>SWISS ROLL - (C,G) V</b>                    | 9€   |
| CREAM CHEESE, AVOCADO, CUCUMBER                |      |



Beyond 2



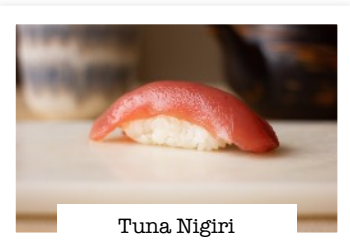
Kakiage Roll



Beyond

### NIGIRI (2 PCS)

|                         |      |
|-------------------------|------|
| <b>SALMON - (D)</b>     | 5.2€ |
| <b>TUNA - (D)</b>       | 6€   |
| <b>EEL - (D)</b>        | 9€   |
| <b>AVOCADO - (D) VE</b> | 4.6€ |



Tuna Nigiri



Salmon Nigiri



Avocado Nigiri

### MAKI (6 PCS)

|  |      |
|--|------|
| <b>SALMON - (D)</b>                      | 5.5€ |
| <b>TUNA - (D)</b>                        | 6€   |
| <b>EEL - (D)</b>                         | 9€   |
| <b>CREAM CHEESE - (G) V</b>              | 4.8€ |
| <b>KAPPA (CUCUMBER) - (D) VE</b>         | 4€   |
| <b>AVOCADO - (D) VE</b>                  | 5.2€ |
| <b>OSHINKO (RADISH PICKLES) - (D) VE</b> | 4€   |



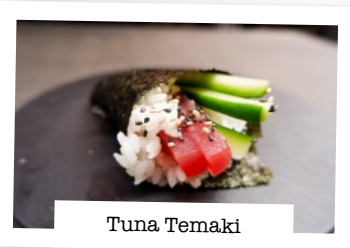
Tuna Maki



Salmon Maki

### TEMAKI

|   |    |
|---|----|
| <b>SALMON TEMAKI - (D,C)</b>                        | 5€ |
| SALMON, AVOCADO, SALAD                              |    |
| <b>TUNA TEMAKI - (D)</b>                            | 6€ |
| TUNA, AVOCADO, SALAD                                |    |
| <b>SHRIMP TEMAKI - (A,A1,B,C,F)</b>                 | 5€ |
| FRIED SHRIMP, SALAD                                 |    |
| <b>SPICY THUN TEMAKI - (C,D)</b>                    | 4€ |
| COOKED TUNA PASTE WITH MAYO, CARROTS, ONIONS, SALAD |    |
| <b>BEYOND TEMAKI - (F) VE</b>                       | 5€ |
| MISO, AVOCADO, CARROTS, RADISH, SALAD               |    |
| <b>BEYOND 2 TEMAKI - (F) VE</b>                     | 5€ |
| MISO, SESAME, CARROTS, RADISH, CUCUMBER, SALAD      |    |



Tuna Temaki



Salmon Temaki



Shrimp Temaki



Beyond Temaki





## DRINKS

### COLD DRINKS

|   |      |
|---|------|
| HOMEMADE LEMONADE -<br>LEMON, SUGAR, HONEY                    | 4.8€ |
| WITH CUCUMBER -   | 5.3€ |
| WITH RASPBERRY -  | 5.6€ |
| WITH PASSION FRUIT -  | 5.8€ |
| WITH VODKA (ALCOHOL) -  | 6.8€ |
| BARLEY TEA -  | 3€   |
| GREEN TEA -   | 3.3€ |
| COLA                   330ML -                                | 3.5€ |
| COLA SUGAR FREE 330ML -                                       | 3.5€ |
| APPLE JUICE       200ML -                                     | 3€   |
| APPLE SPRITZER 330ML -  | 3.3€ |
| WATER               250ML -                                   | 3€   |
| 750ML -   | 7€   |
| AQUA MINT & CUCUMBER -<br>MINERAL WATER, CUCUMBER, MINT, LIME | 8.5€ |

### HOT DRINKS

|   |               |
|---|---------------|
| FRESH GINGER TEA -                      | 3.8€          |
| FRESH MINT TEA -                        | 3.8€          |
| FRESH GINGER & MINT TEA -<br>WITH HONEY | 4.2€<br>+0.5€ |
| GREEN TEA -                             | 2.5€          |
| ASSAM TEA -                             | 2.8€          |
| JASMINE TEA -                           | 3.5€          |
| COFFEE -                                | 2.7€          |
| ESPRESSO -                              | 2.5€          |
| DOUBLE -                                | 4.5€          |

### BIER

|                                   |      |
|-----------------------------------|------|
| KIRIN (DRAFT) 270ML -             | 4.2€ |
| BITBURGER ALCOHOL FREE<br>330ML - | 3.5€ |

### SAKE

|                                   |      |
|-----------------------------------|------|
| HAKUSHIKA 90ML - (ONLY COLD)      | 5.4€ |
| 160ML - (COLD/WARM)               | 9.2€ |
| HAKUSHIKA JUNMAI GINJO<br>300ML - | 19€  |
| KIKUSUI 90ML - (ONLY COLD)        | 8.3€ |
| 160ML - (COLD/WARM)               | 14€  |

### JAPANESE SPECIALTIES WITH ALCOHOL

|                          |      |
|--------------------------|------|
| YUZU FOR APERITIF 20ML - | 4€   |
| UME FOR APERITIF 80ML -  | 5€   |
| UME SODA 300ML -         | 6.5€ |
| GIN & TONIC 300ML -      | 10€  |



Homemade Lemonade



Aqua Mint & Cucumber





## DESSERT

- MATCHA TIRAMISU** - (C,G,H3) V 5.5€  
SWEET RED BEANS, CREAM, MATCHA
- FONDANT AU CHOCOLAT** - (A,A1,C) V 6.5€
- MOCHI ICE CREAM** - (C,G) V 5.5€  
MOCHI, VANILLA ICE CREAM, CHOCOLATE ICE CREAM
- DANGO** - VE 5.5€
- YUZU FROM TOKUSHIMA** - (C,G) V 5.5€  
YUZU, MASCARPONE, EGG

- KUROMITSU-KINAKO PARFAIT** - (A,A2,C,G) V 6.6€  
VANILLA ICE CREAM, WAFERS, CORNFLAKES, WALNUTS, SWEET RED BEAN, BLACK SUGAR SYRUP, SOYBEAN POWDER

- MATCHA PARFAIT** - (A,A1,C,G) V 6.6€  
MATCHA ICE CREAM, WAFFLE, CORNFLAKES, WALNUT, RED BEAN, BLACK SUGAR SYRUP, MATCHA

- KUROGOMA PARFAIT** - V 6.6€  
BLACK SESAME ICE CREAM, WAFFLES, CORNFLAKES, WALNUTS, SWEET RED BEAN, BLACK SUGAR SYRUP, SOYBEAN POWDER

## ICE CREAM

- KUROGOMA ICE CREAM** - (C,G,K) V 4.5€
- MATCHA ICE CREAM** - (C,G) V 4.5€
- KUROMITSU KINAKO ICE CREAM** - (C,G) V 4.5€



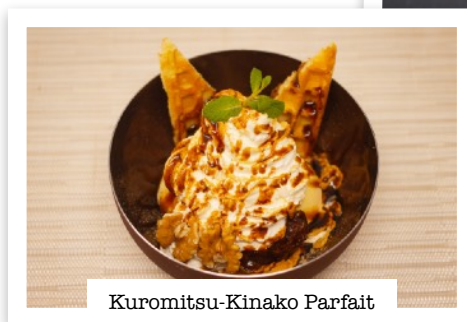
Matcha Tiramisu



Mochi Ice cream



Yuzu from Tokushima



Kuromitsu-Kinako Parfait

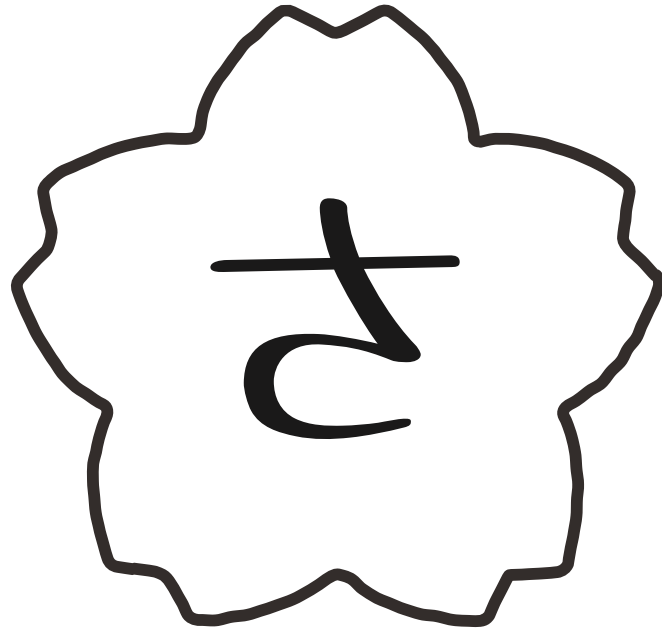


Dango





SUSHI BISTRO  
**SAKURA**

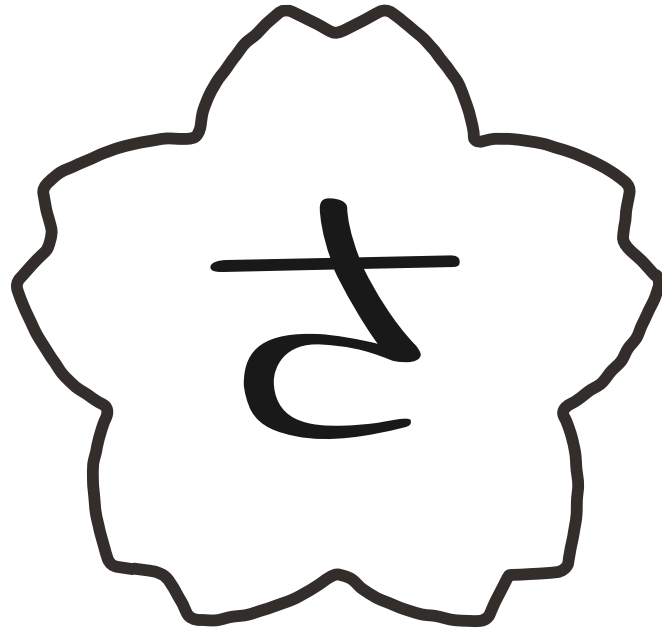


**LUNCH MENU**





SUSHI BISTRO  
**SAKURA**



**DINNER MENU**

